

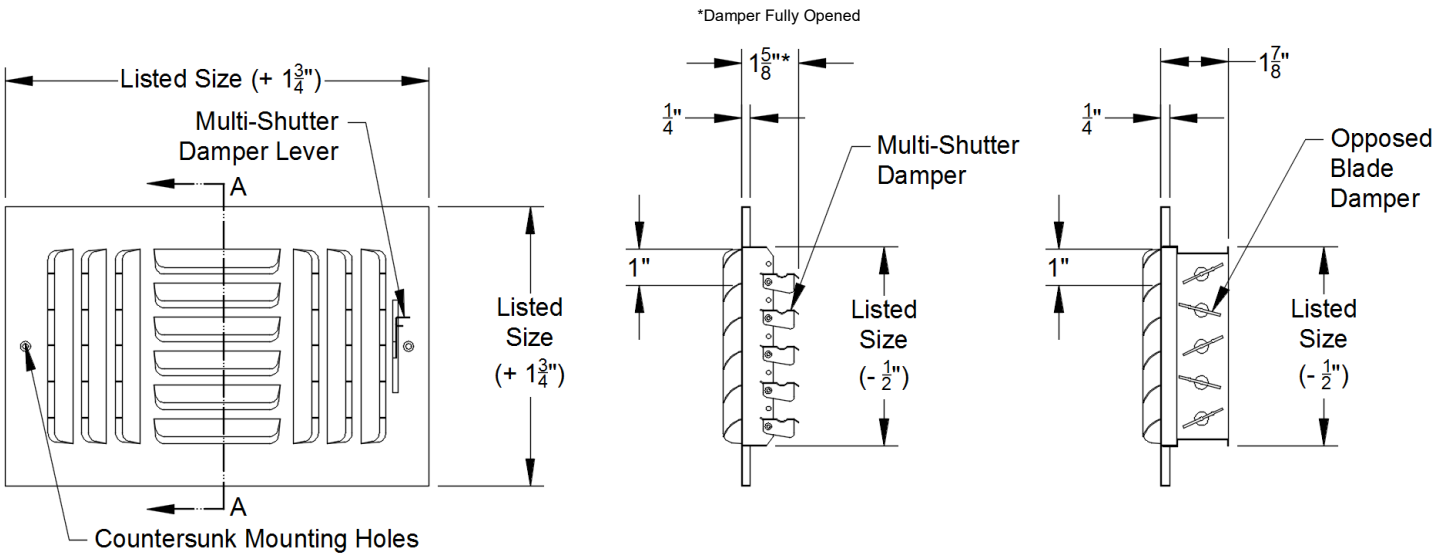
Model: \_\_\_\_\_ Size: \_\_\_\_\_ Tag: \_\_\_\_\_

Project Name: \_\_\_\_\_

Project Location: \_\_\_\_\_

Engineer: \_\_\_\_\_ Contractor: \_\_\_\_\_

Distributor: \_\_\_\_\_ Representative: \_\_\_\_\_

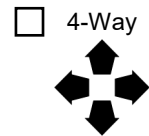
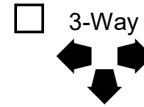
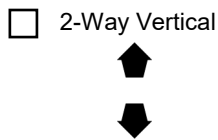
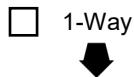


403 shown; all dimensions are typical for the 400 series

**Section AA**  
 SmoothGlide™ Multi-Shutter Damper

**Section AA**  
 Opposed Blade Damper

### Available Throw Patterns



#### Features:

- Pristine White Powder Coat Finish
- #8 x 2" Long Mounting Hardware

#### Construction Options:

- Aluminum Construction
- Steel Construction

Note: This submittal is meant to demonstrate the general dimensions of this product. The illustrations are not meant to detail every aspect of the product. Drawings are not to scale. T.A. Industries, Inc. reserves the right to make changes without notice or obligations.